



Fun in the sun

Design, orientation and sustainable features make for memorable vacations at this home

Above: Access to this Moskow Architects-designed home, which is composed of two distinct wings, is via a covered walkway. A stand-alone shower near the sleeping quarters provides a clean-off point after returning from the beach. The two structures, which are orientated to make the most of refreshing breezes, open inwards onto porches that step down to a grassed central space.

Generally speaking, homes are designed to cope with a spectrum of seasonal conditions. However, when a second home is destined for use during warmer months only, the design can focus more specifically on lifestyle-enhancing benefits such as indoor-outdoor connections and keeping cool. Such was the case with this vacation home, which was designed by Keith Moskow and Robert Linn from Moskow Architects. Comprised of two wings – one for sleeping and one for living – joined by covered walkways, this Martha’s Vineyard home is a summer retreat designed for simultane-

ous use by more than one family at a time. “As a summer vacation home, we weren’t too concerned with warmth in winter. What was important was that there was room for more than one family, which is why each of the two wings features a master bedroom,” says Moskow. “In summer’s shoulder months, when the home is less likely to be used by many people at the same time, the bedroom above the living wing makes it possible to live on just one side.” The home sits on a scrub oak-covered, six-acre site, with each wing aligned parallel to the property’s boundaries. A covered walkway provides



Above: The sun that penetrates the surrounding scrub oak creates a dappled light that plays on the outer walls of the home. Lead-coated copper roofs, which feature large lightwells, were chosen for durability. **Left:** The design minimizes the need for upkeep. It features sustainable materials such as fir and cedar that will take on a silvery sheen as it ages.



Above and right: The living room fireplace uses a Rumford-style firebox designed to maximize energy efficiency. The chimney and the surrounding stone floor are designed as a thermal flywheel – absorbing heat during the day and re-radiating it at night. All living and sleeping areas open out through large doors to wide porches and the grass-covered central space.



access to the home from the parking area. Along this walkway, a stand-alone shower gives occupants a chance to wash off any sand accumulated while frolicking down at the nearby beach.

“The approach to the house is along a driveway that hugs a natural treeline. The benefit of this is that you experience a view on the approach, then lose it in the trees. Upon reaching the home you can slip between the buildings and rediscover a wide, open view. The twin structures basically form bookends to the view,” says Moskow.

The simple, unadorned home features clean, straight lines that are not typical of the region’s

traditional architecture.

“The materials and forms are of the place, but what differs is the arrangement,” says Moskow.

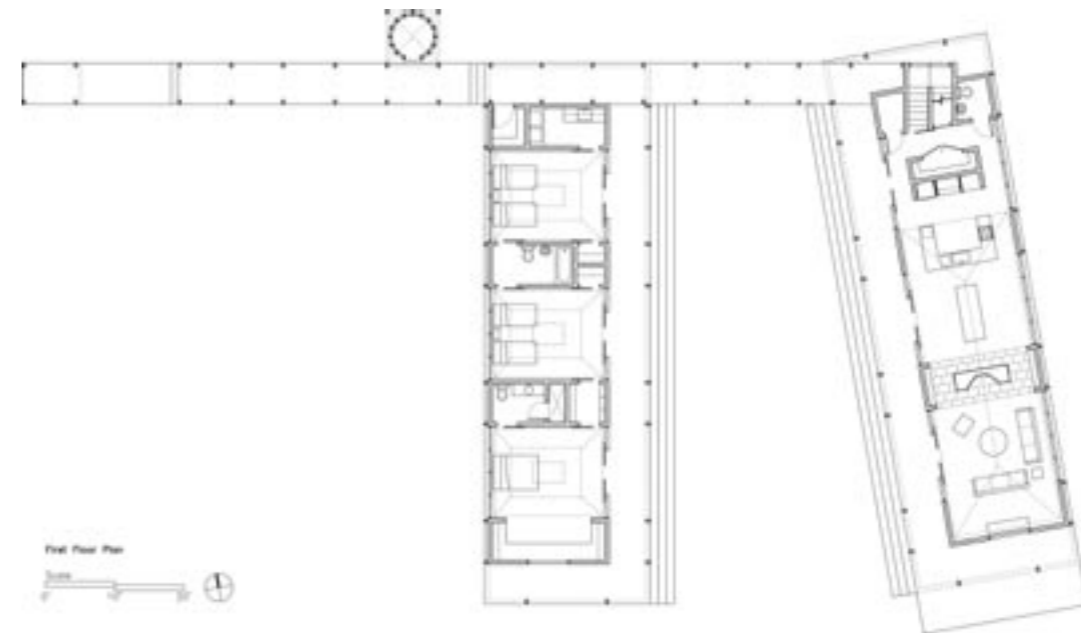
“Fir is the primary exposed structural material, and is used for exterior decks, exterior trim, interior floors and ceilings. White cedar shingles clad the walls, lead coated copper clads the roofs, while interior millwork is maple. The house’s exterior has been designed to minimize the need for upkeep. And I’ve used durable and sustainable materials wherever possible.”

As it is mainly a summer residence, the design works to reduce the impact of heat during the



Above: Despite being unadorned, the level of attention given to millwork is a design feature in itself. Floors are crafted from fir, while the other millwork is maple.

Left: The kitchen appliances all conform to Energy Star requirements. Hot water is provided by a highly efficient on-demand heater. Stone for the counters and chimney is green slate.



- Architect:** Keith Moskow AIA, Robert Linn AIA, Moskow Architects (Boston, MA)
 - Builder:** Interior by McGrath Carpentry Services
 - Structural engineer:** John Queen
 - Kitchen manufacturer:** Dana Robes Wood Craftsman
 - Doors and windows:** Eagle Door and Window
 - Flooring:** Fir
 - Paints and varnishes:** Benjamin Moore; Sikkens
 - Lighting:** Flos, Canlet and Stonco fittings
 - Furniture:** Charles Webb
 - Kitchen cabinetry:** Maple
 - Countertops:** Camara Slate
 - Backsplash:** American Olean
 - Kitchen sink:** Kohler
 - Oven:** GE
 - Cooktop and ventilation:** Jennair
 - Microwave, refrigerator and dishwasher:** General Electric
 - Basin, faucets and tub:** Kohler
 - Hot water system:** Rinnai On Demand
 - Shower fittings:** Kohler
- Photography by Greg Premru**

hottest times of the long summer days.

“A number of energy efficient features are integrated into the building. A highly insulated plenum space between the roof and ceiling acts as a buffer against summer heat, while the deep roof overhangs shade protect the room’s glass walls against direct solar gain.”

Large overhanging eaves and porches extend the home’s open-plan living areas and bedrooms out into the central grass area. Occupants can sit on the shaded steps, or follow the sun as it winds its way around the home. To reduce the build up of humidity, the home’s orientation channels the

prevailing ocean breezes to the center of the structures.

All the home’s sleeping areas open out through double doors onto the central lawn, while small, high windows form a band around the back walls.

Perhaps one of the most noticeable features of the two structure are the rooftop lightwells, which are orientated to allow soft morning light into the bedrooms and living area.

In each bedroom, built-in wardrobes and under-bed storage compartments provide ample storage for clothes and beach equipment. A separate outbuilding provides space for larger items.

Facing page: Three bedrooms, including one master suite, are contained in the accommodation wing.

Legend for plan: 1 covered walkway, 2 outdoor shower, 3 bedroom, 4 bedroom, 5 master bedroom, 6 kitchen, 7 living room.

Above left: Each bedroom in the sleeping wing features a light well.